

SIMPLE LIFE

SIMPLE LIFE



Manor Road, Prescott, L34

£1,185 PCM

Prescot Park is located within Prescot, Knowsley. This development is part of a wider scheme to transform the area. Many house builders are working alongside each other to offer a stunning selection of new homes and local communities.

The welcoming central hallway of the Grantham sits in between the living room and the kitchen. A house designed with you in mind, the spacious lounge provides the perfect area to relax, whilst the dining/kitchen area provides a great place to spend time and entertain with its French windows opening on to the garden. A WVC is conveniently situated off the hallway, completing the downstairs.

Upstairs, the house has a large master bedroom with fitted, mirrored wardrobes, and a further two bedrooms. A stylish family bathroom with a separate bath and shower provides the best of both worlds, whilst a store room on the landing provides a space to store bits and pieces.

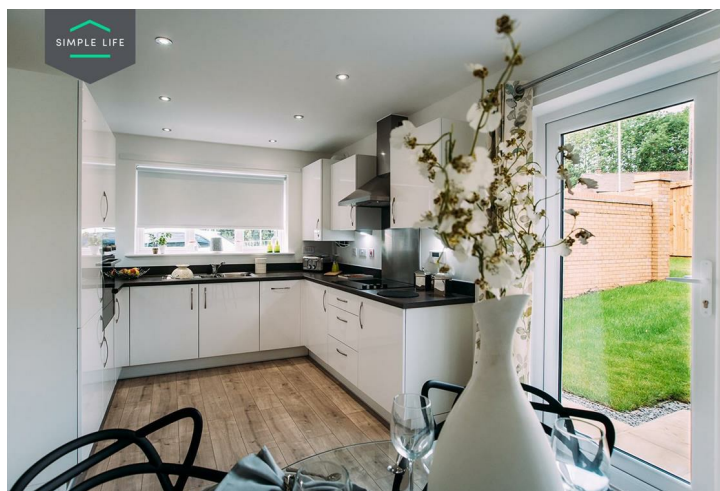
The amenities of Prescot town centre are less than 1 mile away, providing a medical centre, post office, many high street outlets, banks and a selection of independent retailers. Retail therapy is always close by with Cables Retail Park situated 1 mile from your home. Cables Retail Park includes many high street favourites, including Home Bargains, M&S food store, Next, Boots and a Tesco superstore.

At Prescot Park, getting about is easy with Prescot train station just 1.1 miles away and Huyton train station 1.7 miles away, supplying direct services to Liverpool and Manchester. Regular bus services are also available on Manchester Road, a short walk away, arriving every 20 minutes between St Helens and Liverpool. When travelling by car, the M57 is a mile away from the development offering links to Liverpool and the M62 to Manchester and Warrington.

Excellent schools are of many, with 50 'Good' or 'Outstanding' Ofsted rated primary and secondary schools close by.

Deposit: £1360
Unfurnished
Council tax: B
Available 20th January 2026





Key Features

- Private driveway
- Fitted wardrobes to master bedroom
- Fridge freezer
- Oven and hob
- Dark ash style worktops
- Security alarm system
- Dishwasher
- Washing/drying machine
- Light wash wood effect flooring
- Modern, white kitchen units

Location

